



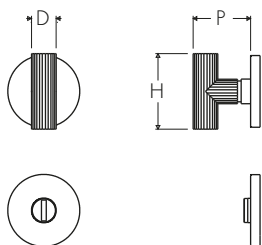
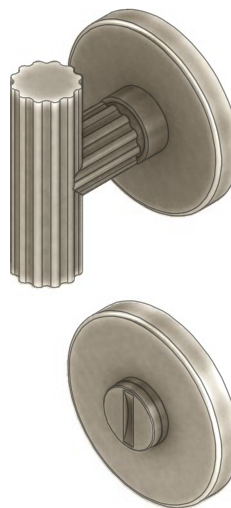
ATELIER BONOMI

Set Segretino/Nottolino su Rosette Serie Doric Doric Series Thumb Turn/Emergency Release Set on Roses

Dimensioni
Dimensions

D	H	P
13	40	30,5

Dimensioni in millimetri
Dimensions given in millimeters



Fornito con ferro quadro segretino 5x95mm con adattatori 6/7/8mm e viti legno.
Disponibile in tutte le finiture standard.

Dimensioni e finiture su misura disponibili su richiesta.

Regularly furnished with 5x95mm thumb turn spindle with 6/7/8mm spindle adaptor and wood screws.

Additional sizes available by special order.

Available in standard and custom finishes.